



helasco

ΣΧΕΔΙΑΣΜΟΣ
ΚΑΤΑΣΚΕΥΗ
& ΑΝΑΠΤΥΞΗ
ΑΚΙΝΗΤΩΝ

LIVING IN COMFORT APARTMENTS



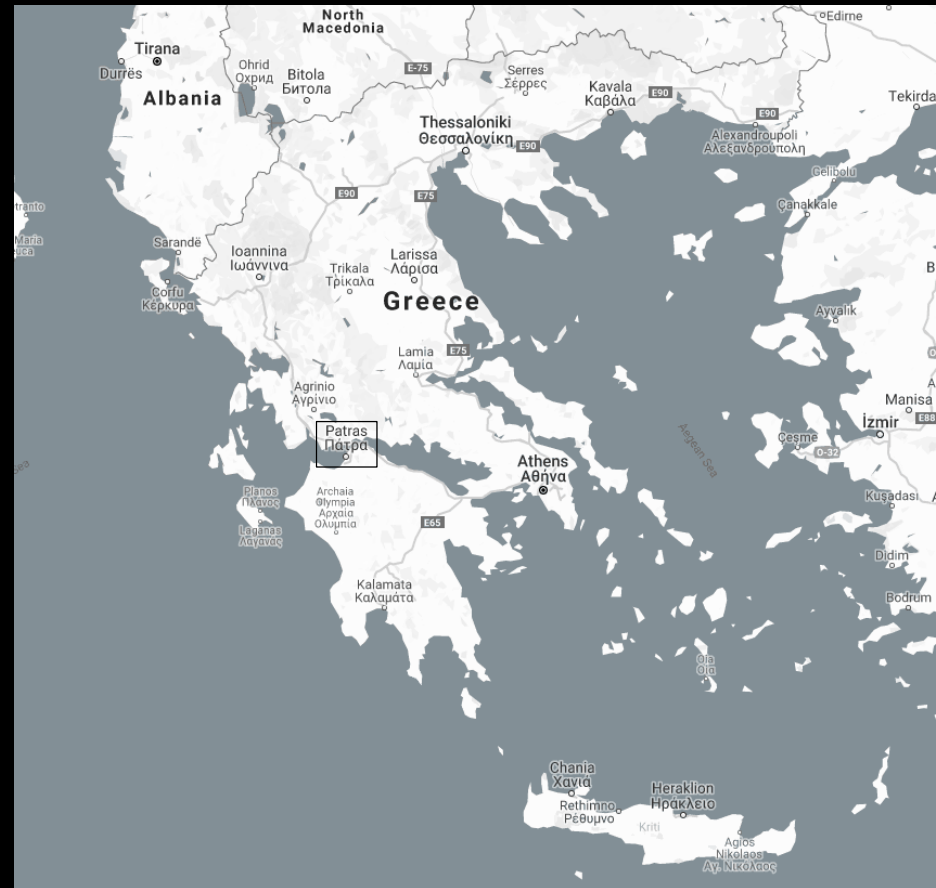
Patras

Greece

Patras is Greece's third-largest city and the regional capital of Western Greece, in the northern Peloponnese, 215 km (134 miles) west of Athens.

Dubbed as Greece's Gate to the West, Patras is a commercial hub, while its busy port is a nodal point for trade and communication with Italy and the rest of Western Europe. The city has two public universities and one Technological Institute, hosting a large student population and rendering Patras an important scientific center [citation needed] with a field of excellence in technological education.

Patras is also famous for supporting an indigenous cultural scene active mainly in the performing arts and modern urban literature.



In the area of Ag. Dionysiou Aeropagitou in Patras South Greece, Gorgopotamou Str. , is constructed the “helasco” – Complex of houses, of high energy class and quality construction.

It is an excellent proposal for a permanent resident since:

- It is an area only for residences, lush, with low building coefficient and buildings of high aesthetic value.
- It offers immediate access to the centre and the exits of the city.
- It is located near permanent and organized sports facilities.
- It is an innovative construction, strong evidence shown below

It is an excellent proposal for safe investment.



LIVING IN COMFORT APARTMENTS

The architecture of the building is minimal, with slight asymmetry and strategically placed openings based on aesthetics and functionality of the individual spaces, as well as of the whole building.

Special attention has been paid to square roofed verandas living rooms of 25-30 m² with immediate access to the indoor living-room and the kitchen and of course with views of the golf of Patras as well as the Panahaikon Mountain.

The living rooms and the kitchens of all apartments have an east view onto the Mountain.





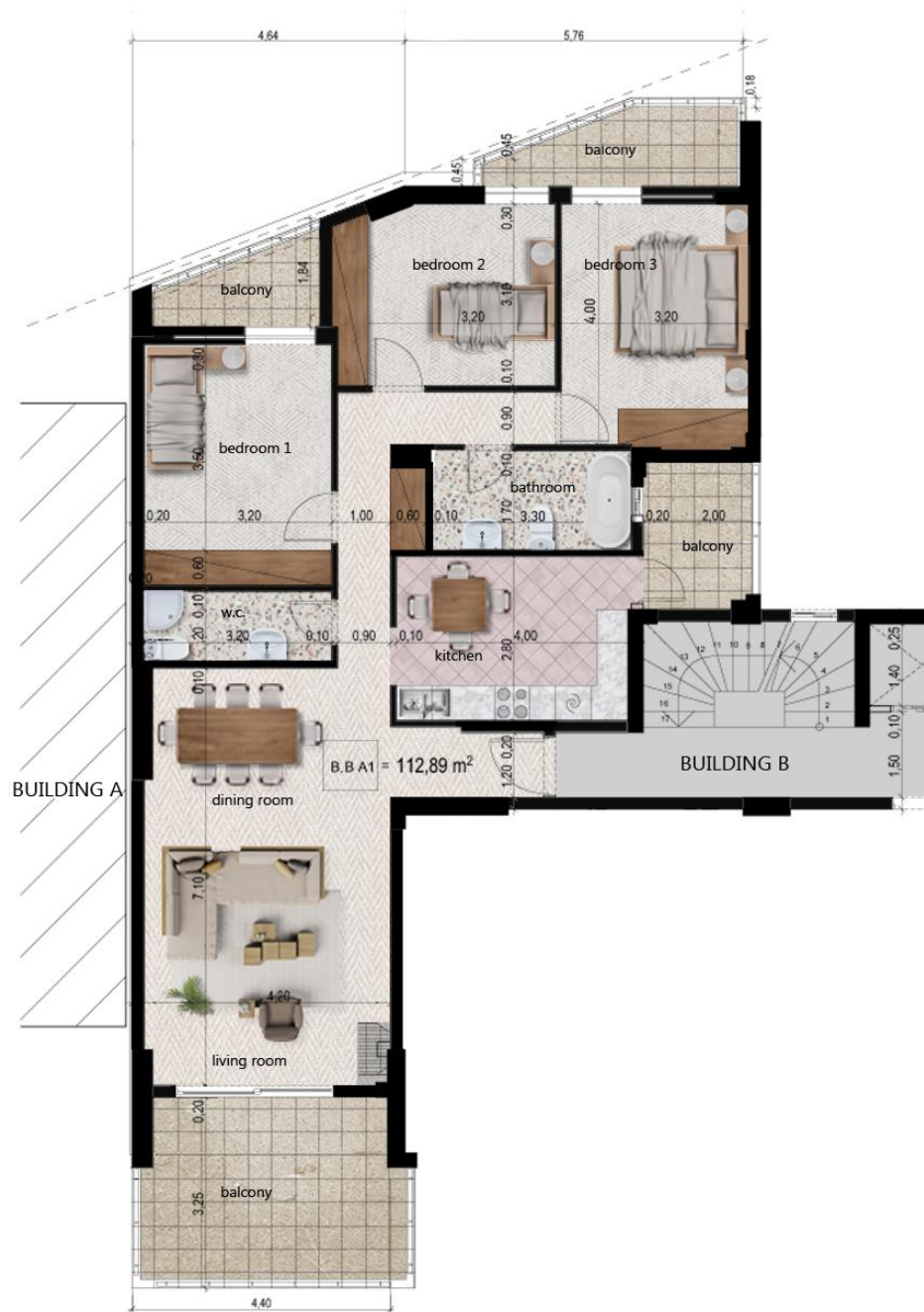
helasco

ΣΧΕΔΙΑΣΜΟΣ
ΚΑΤΑΣΚΕΥΗ
& ΑΝΑΠΤΥΞΗ
ΑΚΙΝΗΤΩΝ

FLAT B A1 112.89 m²

This apartment has open plan living room, dining room with energy fireplace and an adjacent independent kitchen. The living room and the kitchen offer direct access to the main veranda on the view.

The three bedrooms are on the south side with a large veranda and view to the garden. This apartment has two bathrooms one parking space.



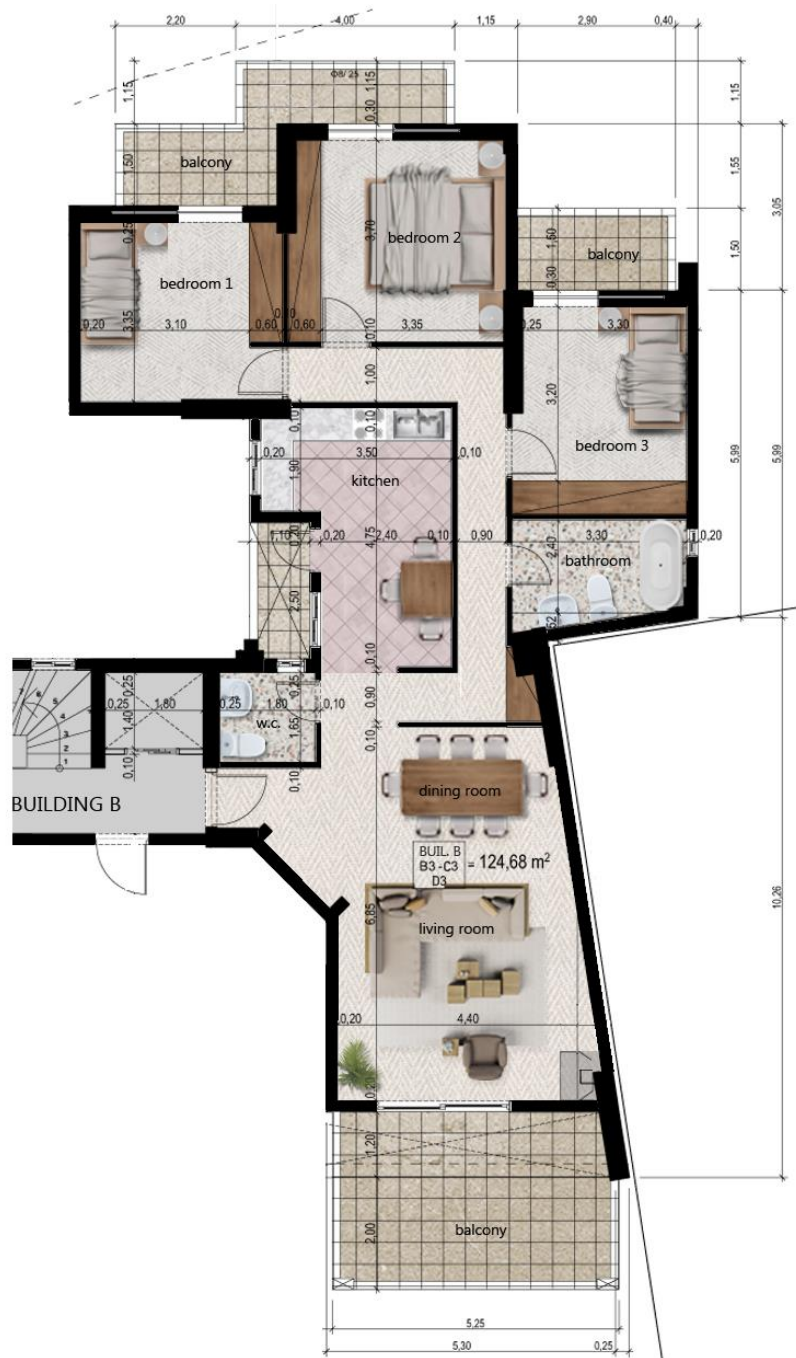


ΣΧΕΔΙΑΣΜΟΣ
ΚΑΤΑΣΚΕΥΗ
& ΑΝΑΠΤΥΞΗ
ΑΚΙΝΗΤΩΝ

124.68 m2

These apartments have open plan living room, dining room with energy fireplace and an adjacent independent kitchen. The living room and the kitchen offer direct access to the main veranda on the view.

The three bedrooms are on the south side with a large veranda and view to the garden. This apartment has two bathrooms one parking space.





helasco

ΣΧΕΔΙΑΣΜΟΣ
ΚΑΤΑΣΚΕΥΗ
& ΑΝΑΠΤΥΞΗ
ΑΚΙΝΗΤΩΝ

FLAT A D2

96.64 m²

This apartment has open plan living room, dining room with energy fireplace and an adjacent independent kitchen. The living room and the kitchen offer direct access to the main veranda on the view.

The three bedrooms are on the south side with a large veranda and view to the garden. This apartment has two bathrooms one parking space.





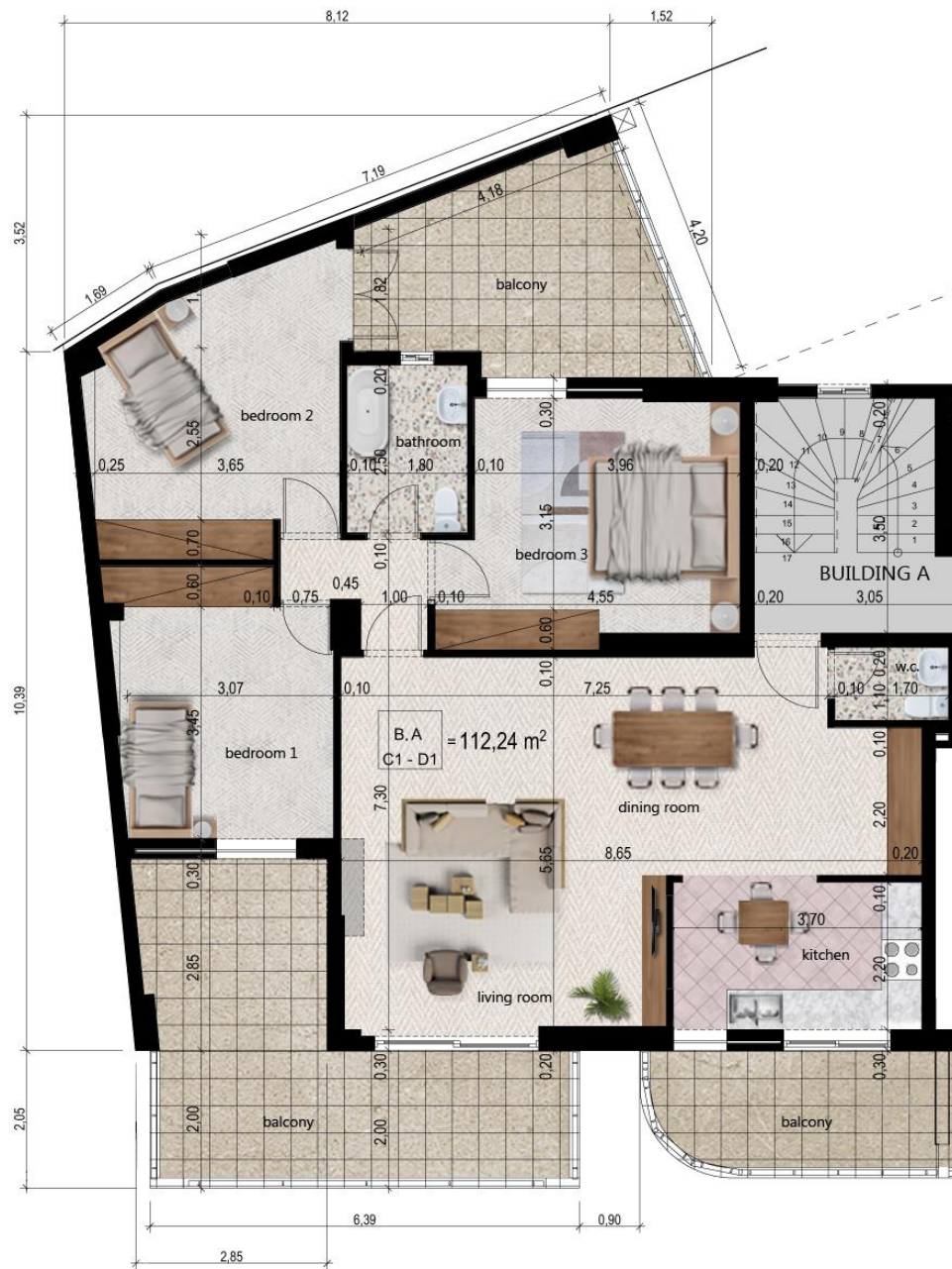
helasco

ΣΧΕΔΙΑΣΜΟΣ
ΚΑΤΑΣΚΕΥΗ
& ΑΝΑΠΤΥΞΗ
ΑΚΙΝΗΤΩΝ

FLATS A C1 - A D1 112.24 m²

These apartments have open plan living room, dining room with energy fireplace and an adjacent independent kitchen. The living room and the kitchen offer direct access to the main veranda on the view.

The three bedrooms are on the south side with a large veranda and view to the garden. This apartment has two bathrooms one parking space.





helasco

ΣΧΕΔΙΑΣΜΟΣ
ΚΑΤΑΣΚΕΥΗ
& ΑΝΑΠΤΥΞΗ
ΑΚΙΝΗΤΩΝ

FLAT A B3 79.75 m²

This apartment has open plan living room, dining room with energy fireplace and an adjacent independent kitchen. The living room and the kitchen offer direct access to the main veranda on the view.

The two bedrooms are on the south side with a large veranda and view to the garden. This apartment has one bathroom one parking space.





helasco

ΣΧΕΔΙΑΣΜΟΣ
ΚΑΤΑΣΚΕΥΗ
& ΑΝΑΠΤΥΞΗ
ΑΚΙΝΗΤΩΝ

FLAT A B1 81.61 m²

This apartment has open plan living room, dining room with energy fireplace and an adjacent independent kitchen. The living room and the kitchen offer direct access to the main veranda on the view.

The two bedrooms are on the south side with a large veranda and view to the garden. This apartment has one bathroom one parking space.





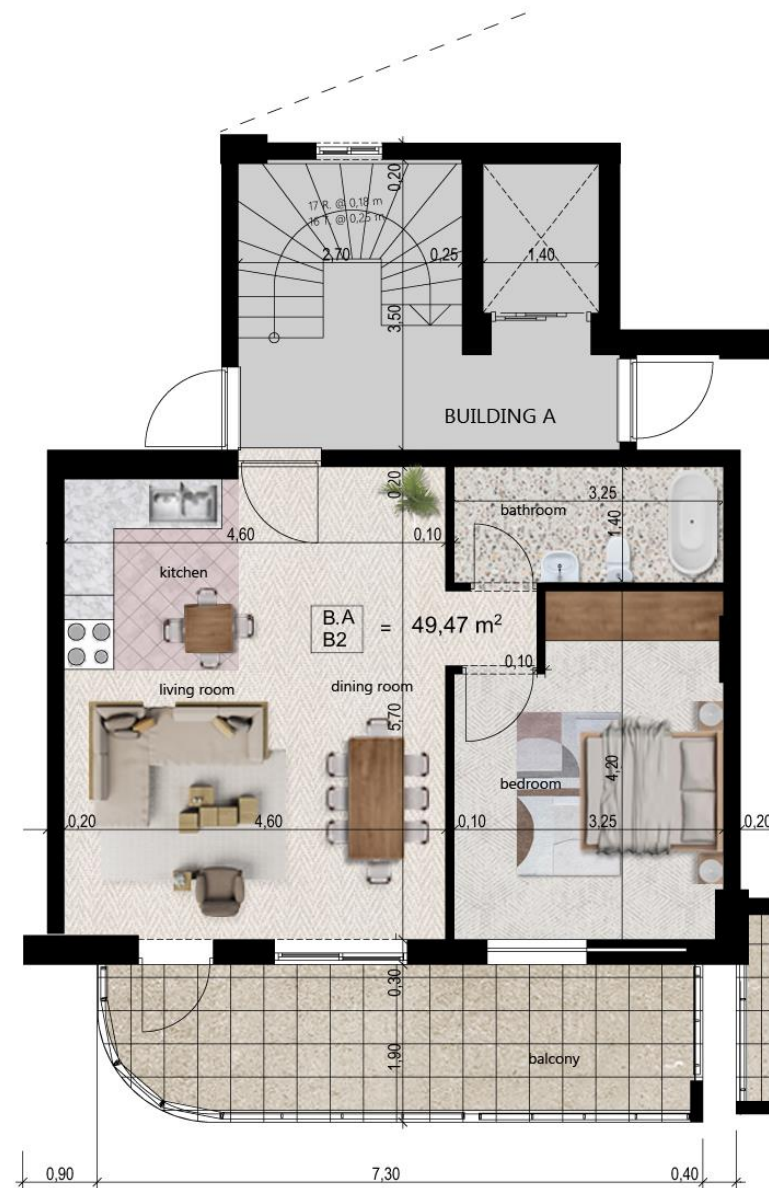
helasco

ΣΧΕΔΙΑΣΜΟΣ
ΚΑΤΑΣΚΕΥΗ
& ΑΝΑΠΤΥΞΗ
ΑΚΙΝΗΤΩΝ

FLAT A B2 49.47 m²

This apartment has open plan living room, dining room with energy fireplace and an adjacent independent kitchen. The living room and the kitchen offer direct access to the main veranda on the view.

The bedroom is on the south side with a large veranda and view to the garden. This apartment has one bathroom one parking space.



In the area of Lagoura in Patras South Greece, Samou Str. , is constructed the “helasco” – Complex of houses, of high energy class and quality construction.

It is an excellent proposal for a permanent resident since:

- It offers immediate access to the centre and the exits of the city.
- It is located near permanent and organized sports facilities.
- It is a calm and secure area only for residences.
- Individual spaces have been designed to be functional and every detail was carefully selected and quality crafted.

It is an excellent proposal for safe investment.





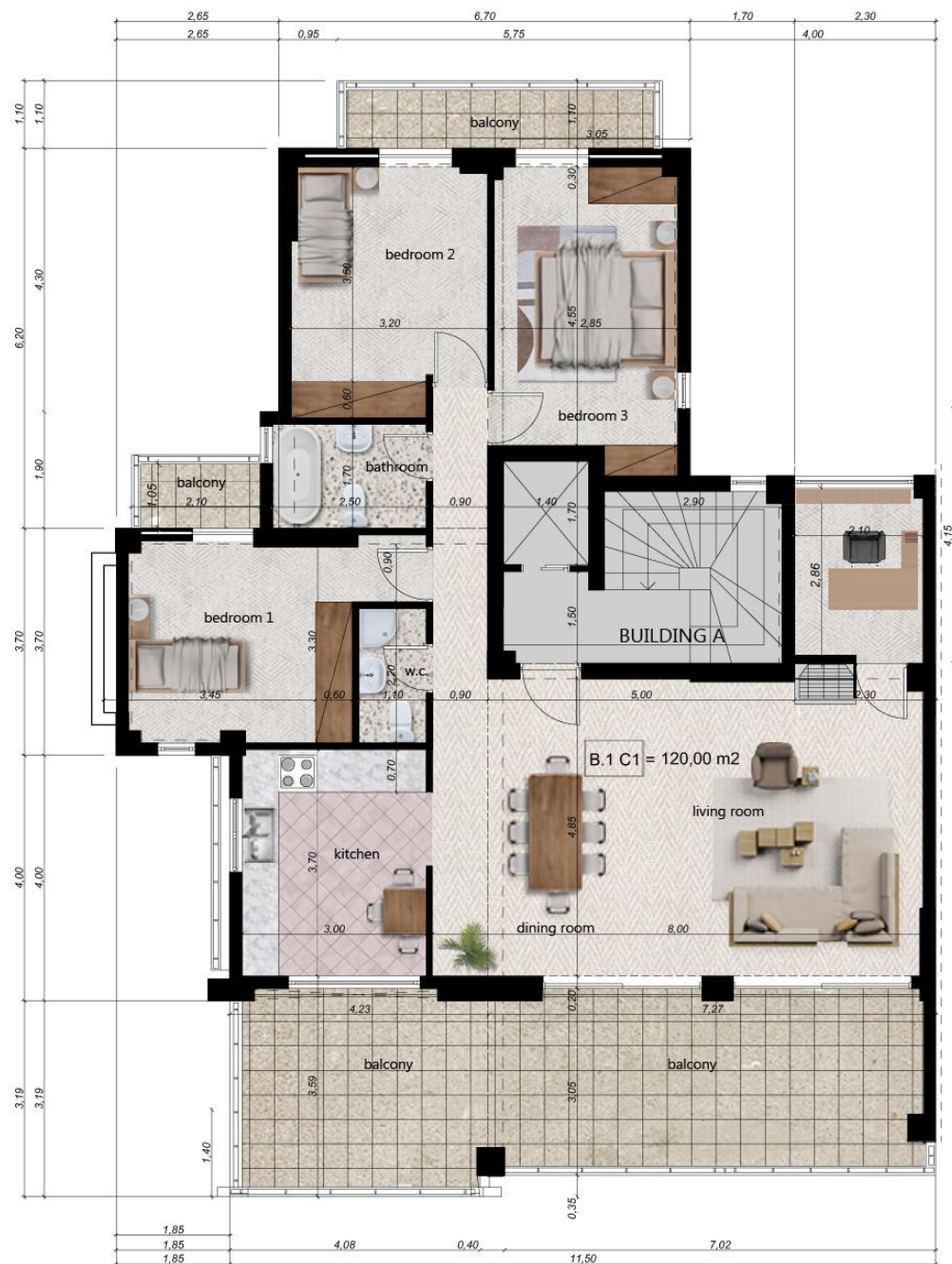
helasco

ΣΧΕΔΙΑΣΜΟΣ
ΚΑΤΑΣΚΕΥΗ
& ΑΝΑΠΤΥΞΗ
ΑΚΙΝΗΤΩΝ

FLAT A C1 120.00 m²

This apartment has open plan living room, dining room with energy fireplace and an adjacent independent kitchen. The living room and the kitchen offer direct access to the main veranda on the view.

The bedrooms are on the south side with a large veranda and view to the garden. This apartment has two bathrooms one parking space.



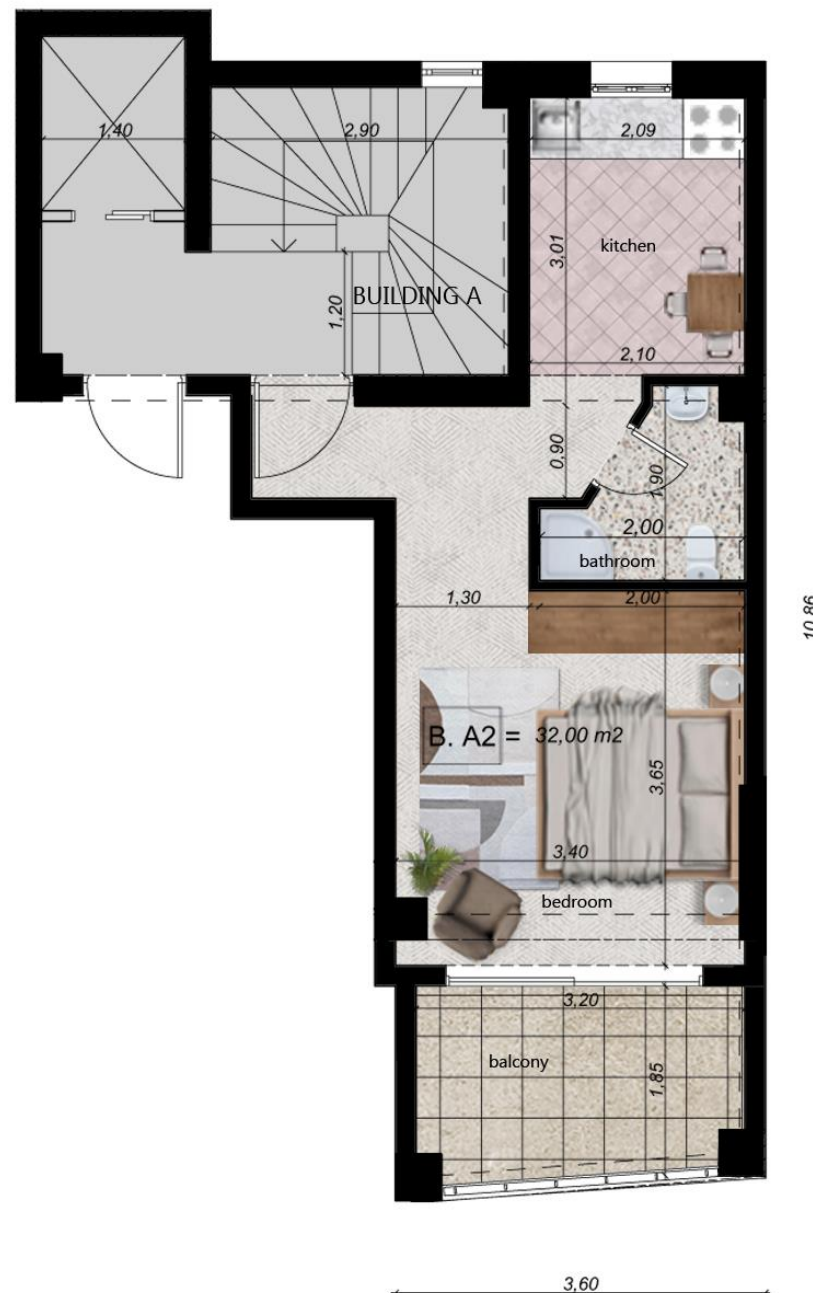


helasco

ΣΧΕΔΙΑΣΜΟΣ
ΚΑΤΑΣΚΕΥΗ
& ΑΝΑΠΤΥΞΗ
ΑΚΙΝΗΤΩΝ

FLAT A A2 32.00 m²

This apartment has open plan bedroom on the north side with a large veranda and view to the garden. An adjacent independent kitchen, one bathroom and one parking space.



In the area of Agioi Apostoloi in Patras South Greece, Odyssea Eliti Str. , is constructed the “helasco” – Complex of houses, of high energy class and quality construction.

It is an excellent proposal for a permanent resident since:

- It offers immediate access to the centre and the exits of the city.
- It is located next to Patras' new port, and near permanent and organized sports facilities
- It is a calm and secure area.

The architecture of the building is minimal, with slight asymmetry and every detail in the interior was carefully selected and quality crafted.

It is an excellent proposal for safe investment.





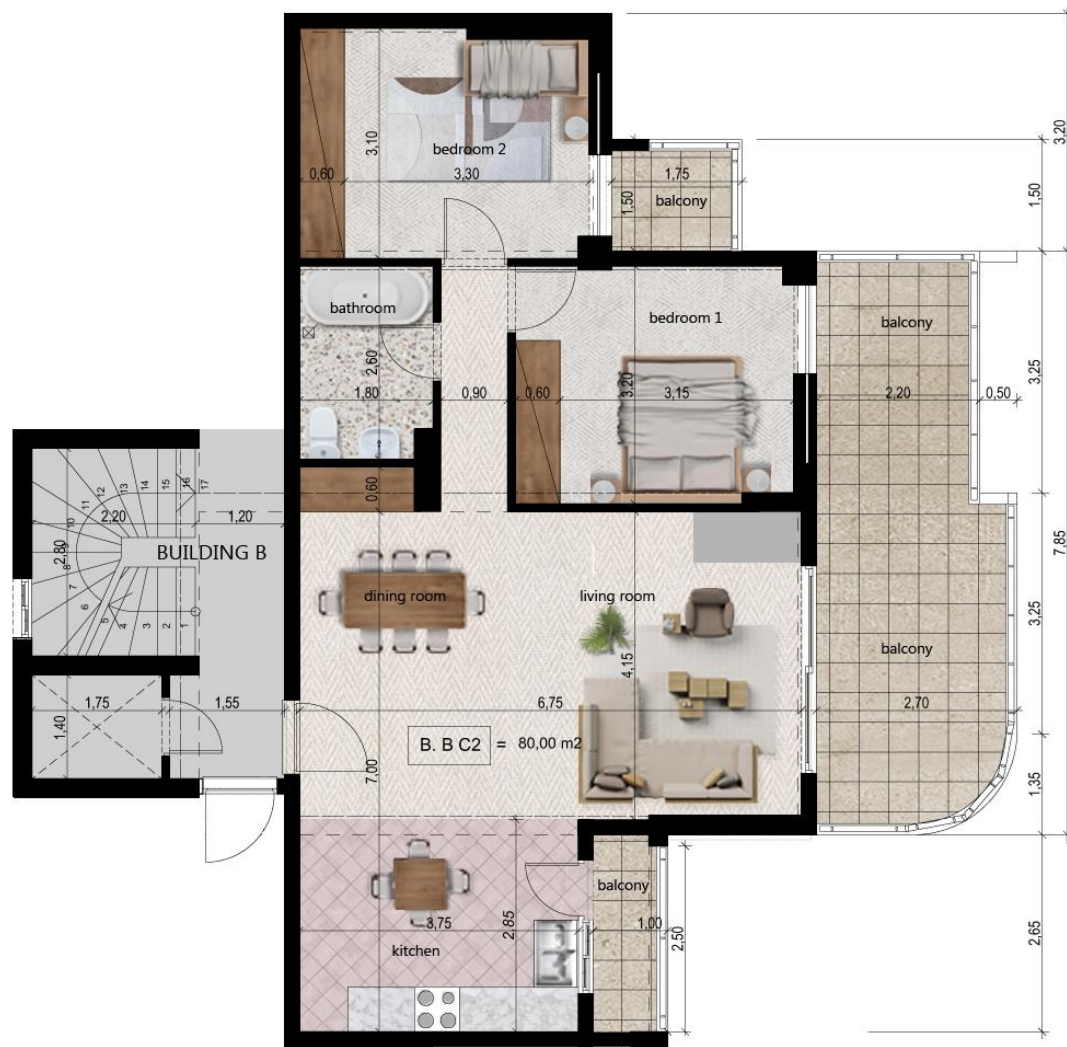
helasco

ΣΧΕΔΙΑΣΜΟΣ
ΚΑΤΑΣΚΕΥΗ
& ΑΝΑΠΤΥΞΗ
ΑΚΙΝΗΤΩΝ

FLAT B C2 80.00 m²

This apartment has open plan living room, dining room with energy fireplace and an adjacent independent kitchen. The living room and the kitchen offer direct access to the main veranda on the view.

The bedrooms are on the south side with a large veranda and view to the garden. This apartment has one bathroom one parking space.





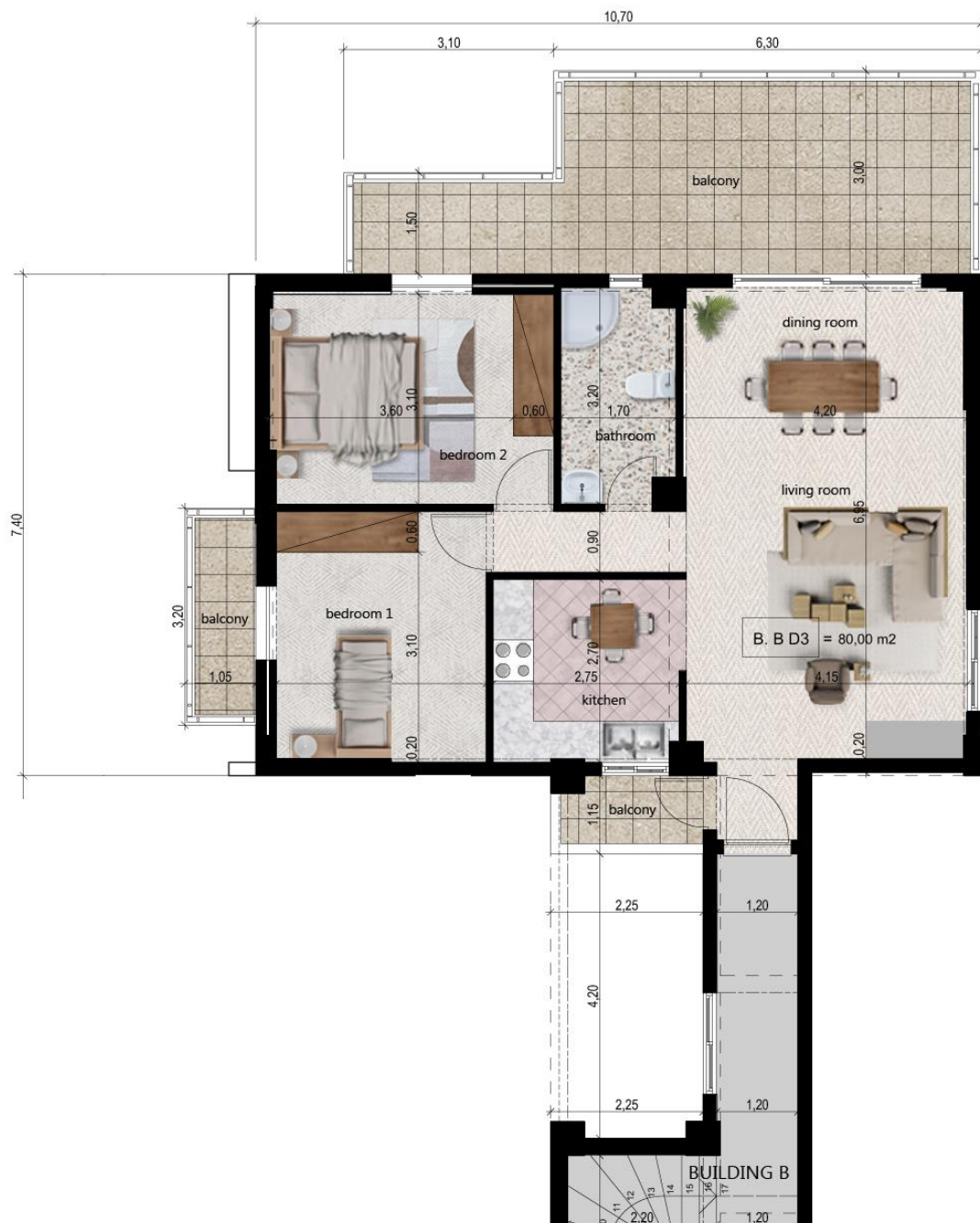
helasco

ΣΧΕΔΙΑΣΜΟΣ
ΚΑΤΑΣΚΕΥΗ
& ΑΝΑΠΤΥΞΗ
ΑΚΙΝΗΤΩΝ

FLAT B D3 80.00 m²

This apartment has open plan living room, dining room with energy fireplace and an adjacent independent kitchen. The living room and the kitchen offer direct access to the main veranda on the view.

The bedrooms are on the south side with a large veranda and view to the garden. This apartment has one bathroom one parking space.





LIVING IN COMFORT APARTMENTS

THE COMPANY

All the aforementioned is the necessary condition. But to make it sufficient we rely upon the people who make up our team.

People who are scientifically qualified, with expertise in the construction of buildings of high standards, with new technologies and materials, those who study, build and give life to all the above.

People characterized by pride in their work and above all love for the constructions and respect towards the owner of every flat.

People who take care creating your dream.

50 KING GEORGE SQ.
262 21 PATRAS – GREECE
T. +30 2610 622612

